

HML-Hydraulic Pump Manually

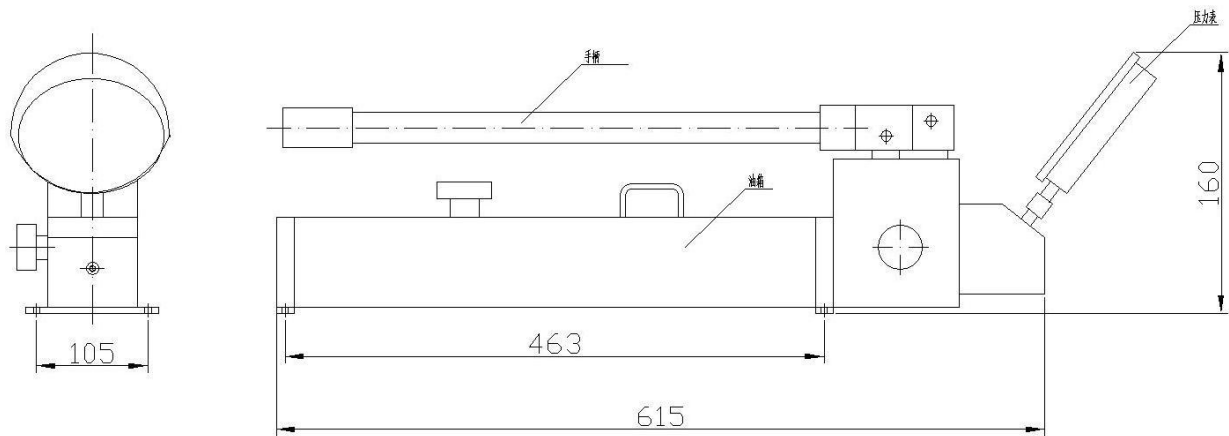


Instructions for use

AILESEN(CHANGZHOU)POWER TECHNOLOGY CO.,LTD

URL:www. aileseng. com

Email:ailesen@163. net



This handbook is an integrating part of the machine, and must be carefully read in full before every operation. It must be kept in case of future references until the getting tip of the machine.

For every doubt or use of the machine not provided by this handbook, please ask the supplier before its installation and working.

I. Technical parameters

Mode	Work pressure (MPa)		Oil amount per stroke (ml)		Output interface	Volume of oil tank (ml)	Overall dimensions (mm)	Weight (kg)
	1 st grade	2 nd grade	1 st grade	2 nd grade				
	HML-1000	3	100	32				
HML-1600	2	160	32	1.6	1/4BSP	2200	585×120×170	9
HML-2500	2	250	32	1.3	1/4BSP	2200	585×120×170	9
P2282	2	280	32	0.9	1/4BSP	2200	585×120×170	11
P2282-2	2	280	32	0.9	1/4BSP	4500	650X195X190	20

II. Introduction to product

series hydraulic pumps manually are two grades pump. At low pressure, it will export high flow, and at high pressure, the flow will become low.

There is pressure release valve in oil tank. It will balance atmospheric pressure inside and outside oil tank. Meanwhile in order to prevent from over loading, this pump has the design of relief valve.

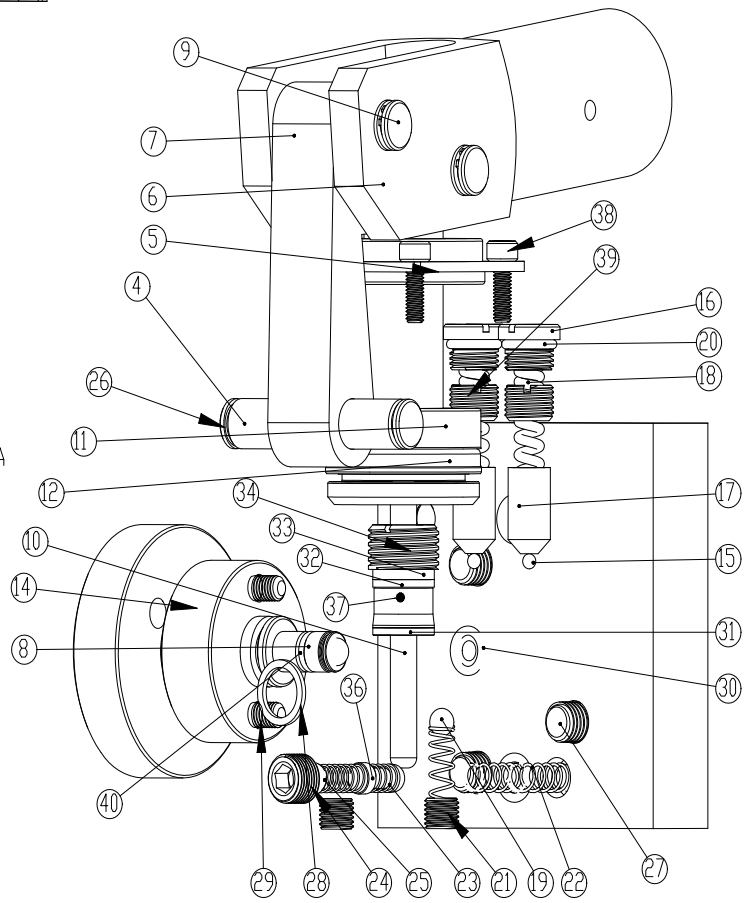
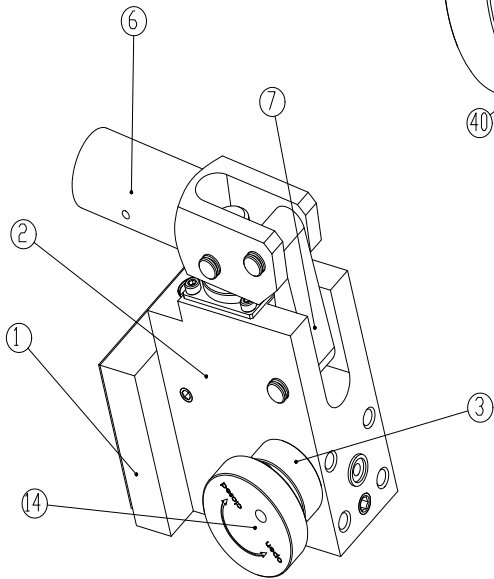
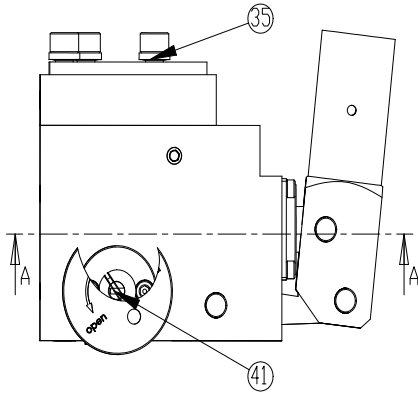
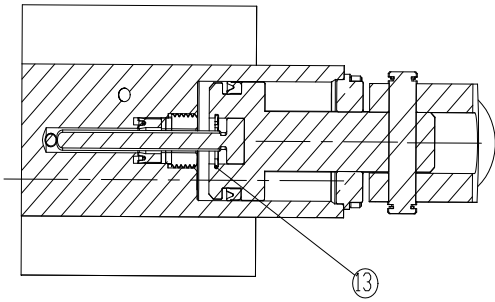
III. Guide to operation

1. Screw off the plug at oil tank below handle to check oil level and after ascertain whether oil is enough for operation. When use hydraulic pump manually to install bearing and hydraulic nut, we recommend to use hydraulic oil with 300 mm²/s of viscosity. When disassembly bearing, we recommend to use hydraulic oil with 900 mm²/s of viscosity at operation temperature.
2. It is benefit to fill oil when keep the pump at horizontal or incline slightly position.
3. Close unloading valve at right side of pump.
4. Screw quick tie-in(the metric system)into part.
5. Connect quick tie-in(female)of high-pressure flexible pipe to quick tie-in of pump body(male)and exhaust air in pipeline fully.
6. Pump the pump to needed pressure. When over the set value of relief valve, oil will flow into oil tank automatically.
7. Open unloading valve and let redundant oil return to oil tank.

IV. Maintenance

1. Use clean and suitable better hydraulic oil only.
2. Keep the inside of pump clean. Don' t let foreign metallic granule and dust enter into it in order to prevent from damage seal and affect the operation of system.
3. Guarantee that the tie-in before use is clean. When not connect, cover protective cover.
4. Any maintenance and repairing work must be done by special person.

A-A



NO.	Name	Amount	NO.	Name	Amount
1	Front cover	1	22	Spring	3
2	Pump body	1	23	Spring	1
3	Unloading valve seat	1	24	Plug	1
4	Long sell	1	25	Steel ball	1
5	Pillar set	1	26	Retainer	6
6	Handle lever	1	27	Screw	3
7	Connect pole	1	28	Washer	1
8	Unloading valve stalk	1	29	Screw	2
9	Short sell	2	30	O-ring	3
10	HP piston	1	31	Support ring	1
11	Piston	1	32	Washer	1
12	Y-ring	1	33	Washer	1
13	Retainer	1	34	Empty plug	1
14	Knob	1	35	Seal ring	3
15	Steel ball	2	36	Spring seat	1
16	Plug	2	37	Y-ring	1
17	Spring seat	2	38	Screw	4
18	Spring	2	39	Screw	2
19	Steel ball	6	40	O-ring	1
20	O-ring	2	41	Cylinder sell	1
21	Plug	3			